

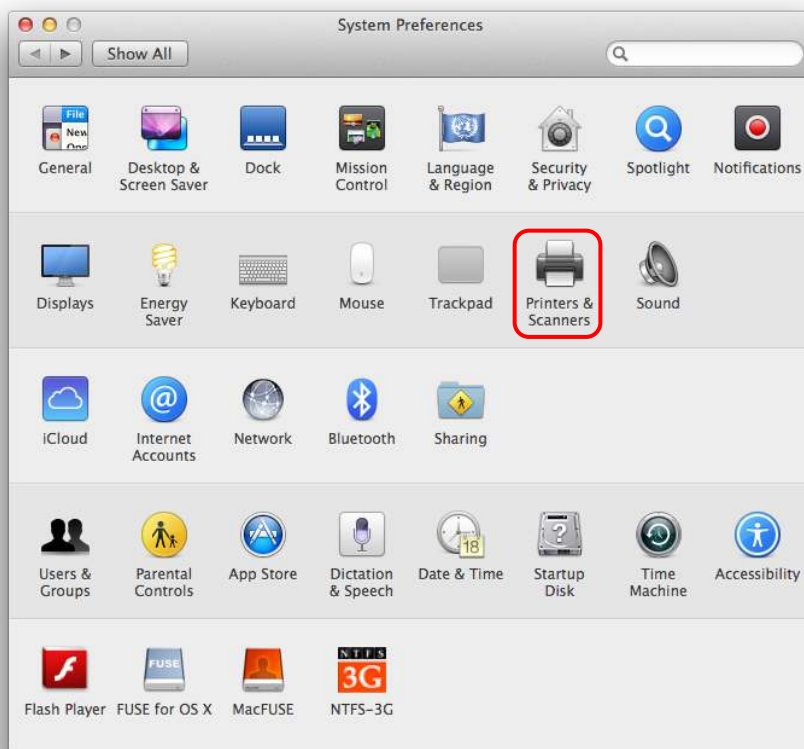
Epson Artisan 1430 Setup for Mac

Printer and Driver Install:

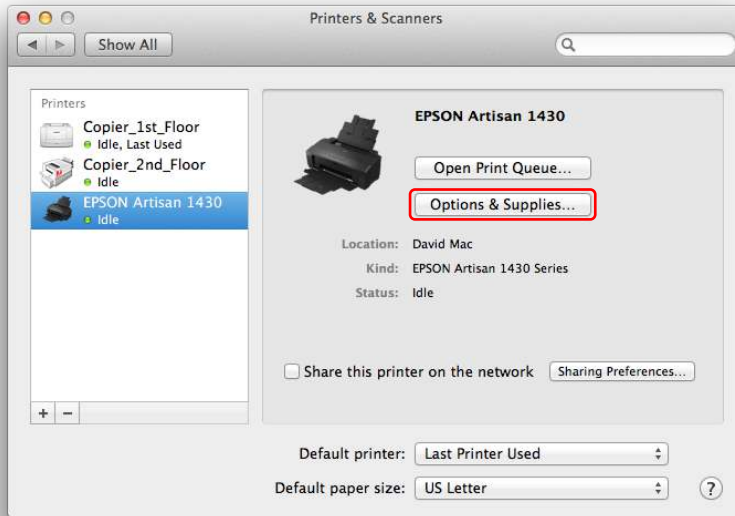
- Follow the “Start Here” instructions included with the printer
- Once you get to step “5 Install software” go here to download the latest driver: <http://www.epson.com/cgi-bin/Store/support/SupportIndex.jsp>
- Search for “Artisan 1430” then, click the link then, click “Downloads & Drivers”
- Download the driver combo package and open the image
- Double click the Epson.app to run the installer
- During the installer you will setup either Wi-Fi or USB connection to the printer
- Load paper and print a test page to verify connection and then complete installer

Turn off High Speed Printing:

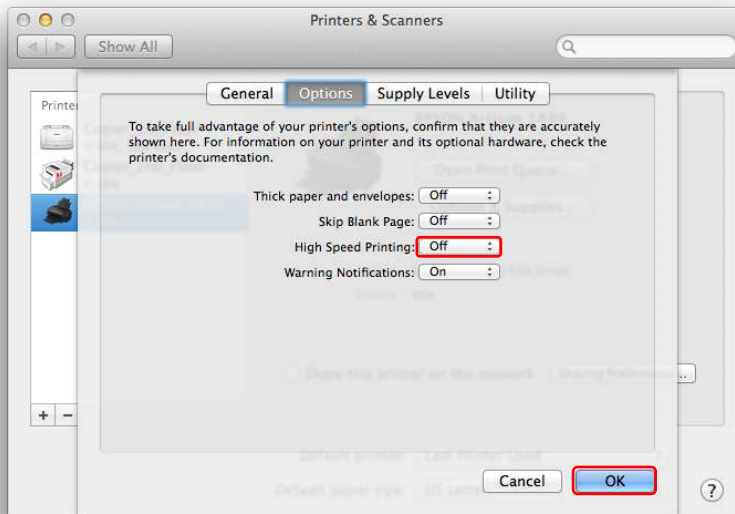
- Once the printer is installed, Open System Preferences then, click printers



- Find the installed Epson Artisan 1430 and select it then, click Options & Supplies



- Select the Options tab then, set "High Speed Printing:" to **off** then, click OK



Printing From Illustrator on Mac:

Disclaimer: Printing from Illustrator on Mac to the Epson Artisan 1430 can produce poor results.

Epson Driver Reference:

Driver version: 9.31

Release date: 10/29/13

Filename: epson15637.dmg

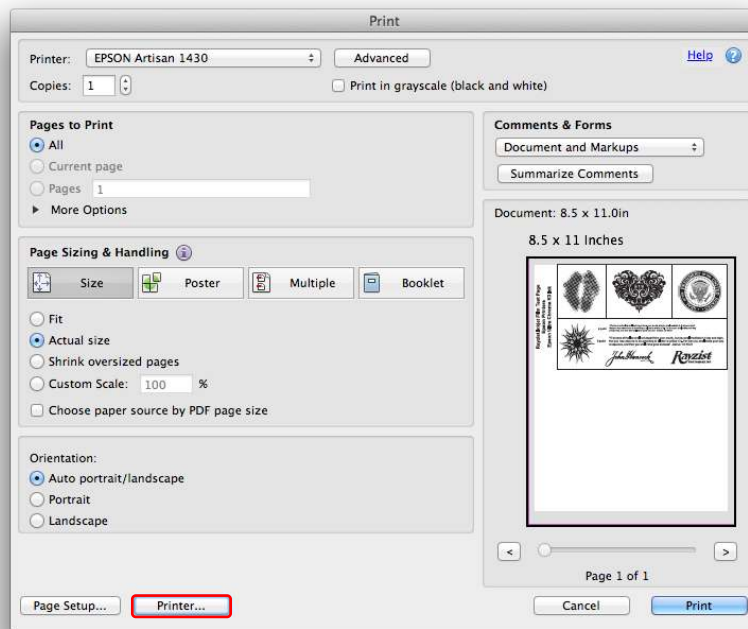
Problem: Printing from Illustrator on Mac produces jagged edge prints even with vector graphics. This is due to the lack of Postscript driver, which in Illustrator forces a bitmap output.

Workaround: In Illustrator, save as PDF. Then, open the PDF file in Adobe Acrobat or Reader and print from there.

Epson Driver Settings:

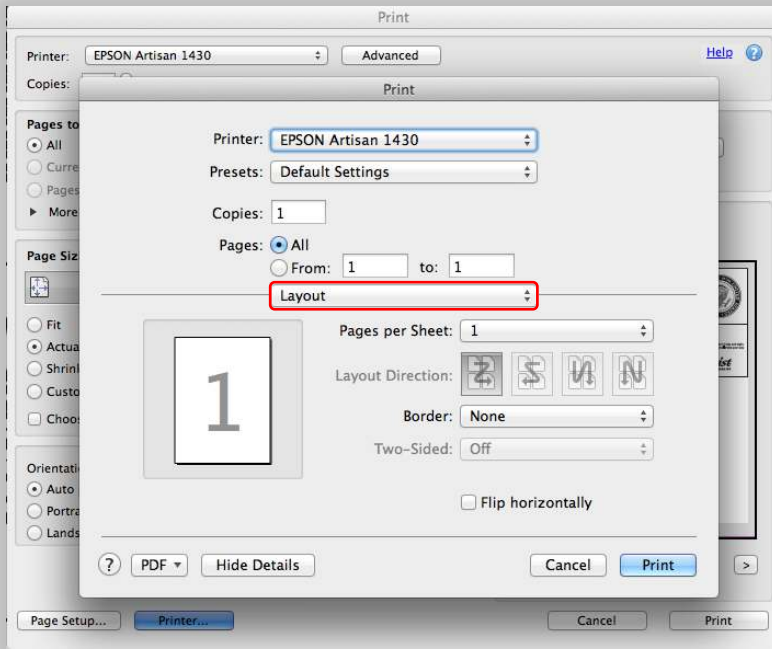
The following steps demonstrate printing from Acrobat with the optimal Epson driver settings for using Rayzist Inkjet Film.

- In the print window of Adobe Acrobat or Reader, click the button “Printer” to access the advanced printer settings

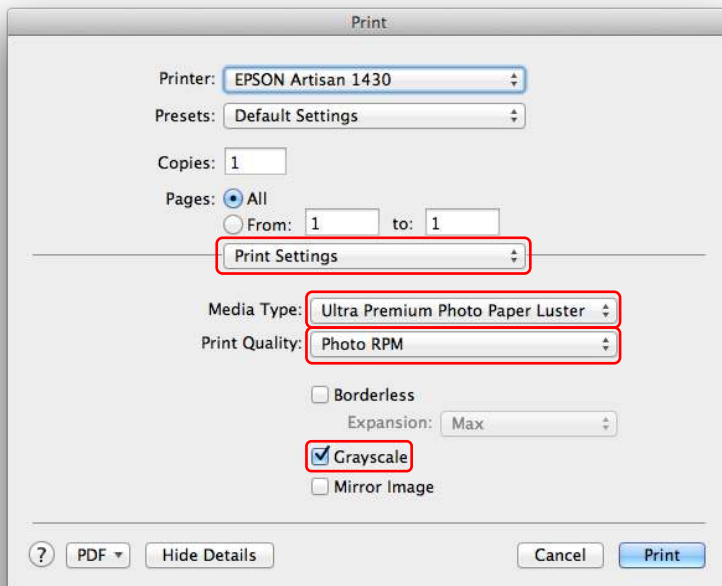


- A warning may appear, if so click yes to continue

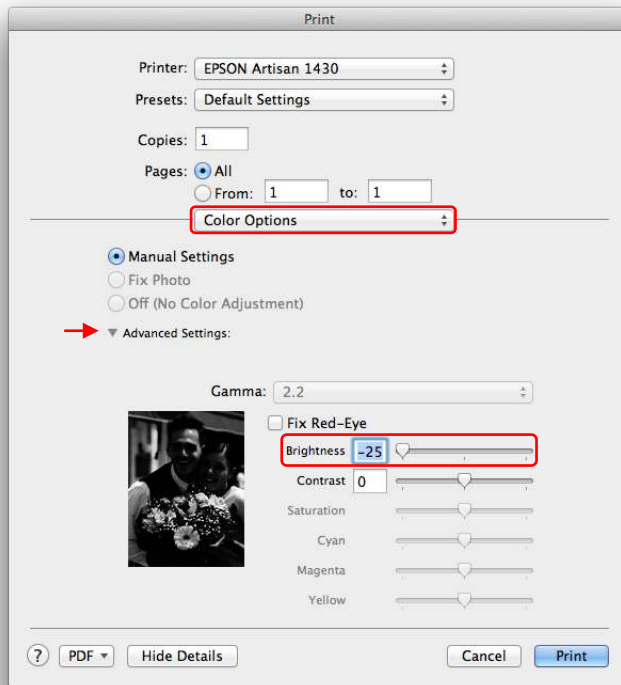
- Find the dropdown set to Layout and change it to “Print Settings” then, set the following:



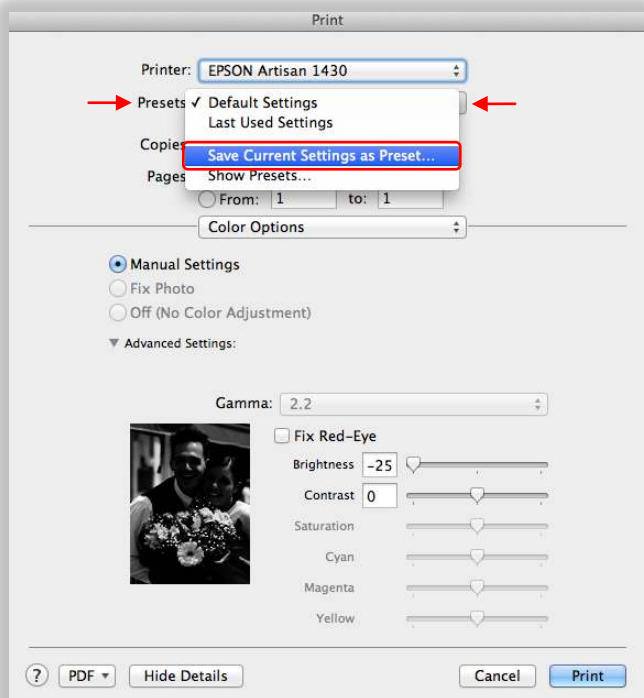
Media Type: Ultra Premium Photo Paper Luster
Print Quality: Photo RPM (highest)
Grayscale: checked



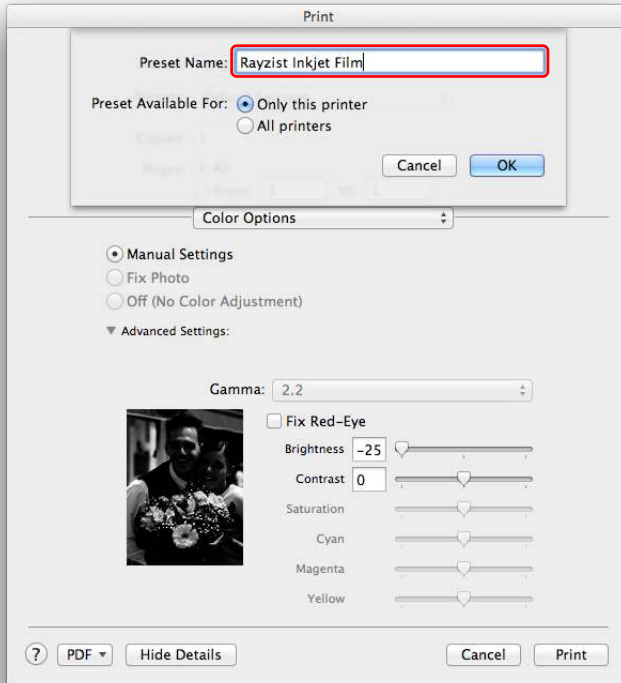
- Now Switch to the setting dropdown “Color Options”
- Expand Advanced Settings and drag the Brightness slider left to the max (-25)



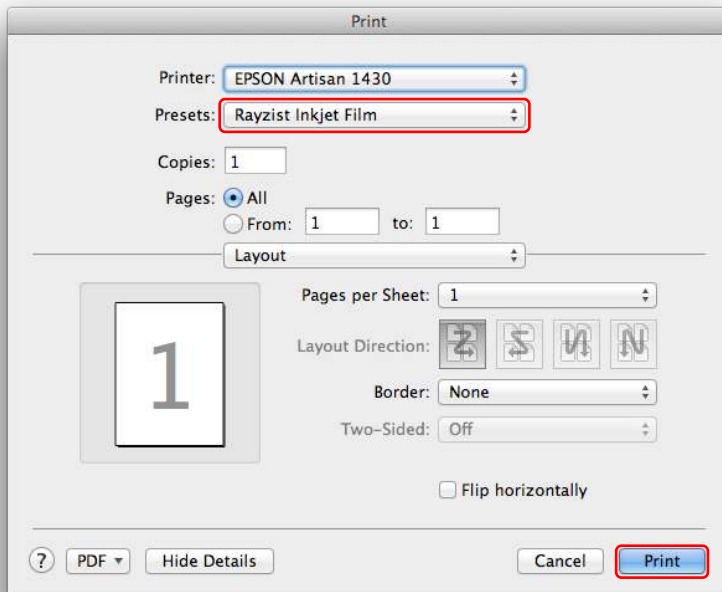
- Once you have these settings correct, click the Presets dropdown and click “Save Current Settings as Preset...”



- Name the preset and click OK



- Now click Print to commit those settings



- For future print actions, simply click the “printer” button and verify the named preset is selected